

APP CRS 232°	Rwy Idg TDZE Apt Elev	N/A N/A 1729
------------------------	-----------------------------	---

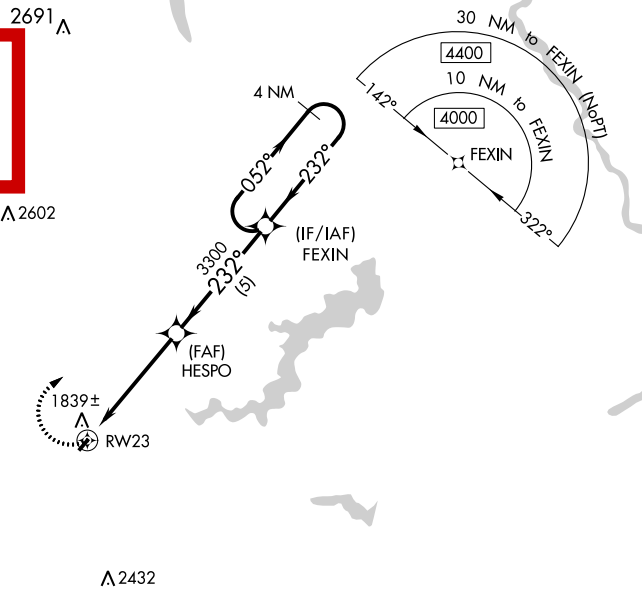
RNAV (GPS)-A
SPRING HILL (70N)

NA DME/DME RNP-0.3 NA. Procedure NA at night. Use Mount Pocono altimeter setting; when not received, use Wilkes-Barre/Scranton altimeter setting and increase all MDA 100 feet and Cat B visibility 1/4 mile. Helicopter visibility reduction below 1 SM NA.

MISSED APPROACH: Climbing right turn to 4000 direct FEXIN and hold.

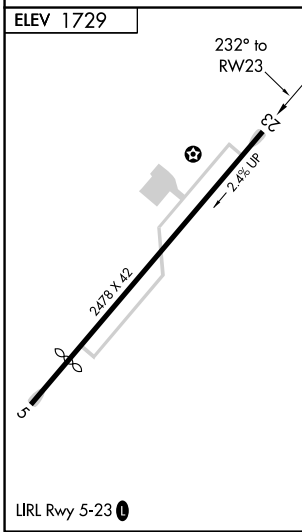
MOUNT POCONO ASOS 120.275	WILKES-BARRE APP CON 126.3 256.7	CTAF 0 122.9
-------------------------------------	--	-------------------------------

NOT FOR NAVIGATION



NE-4, 31 JAN 2019 to 28 FEB 2019

NE-4, 31 JAN 2019 to 28 FEB 2019



4000	FEXIN	Visual Segment - Obstacles.			
		FEXIN HESPO RW23 3300 4000 052° 232°			
		5 NM		5 NM	
CATEGORY	A	B	C	D	
C CIRCLING	2600-1¼ 871 (900-1¼)	2620-1¼ 891 (900-1¼)	NA		