

VORTAC LVZ 111.6 Chan 53	APP CRS 080°	Rwy Idg TDZE Apt Elev	N/A N/A 1729
--	------------------------	-----------------------------	---

VOR/DME-B
SPRING HILL (70N)

Procedure NA at night. Use Mount Pocono altimeter setting, when not received, use Wilkes-Barre/Scranton altimeter setting and increase all MDA 100 feet and Cat B Circling visibility 1/2 mile. Helicopter visibility reduction below 1 SM NA.

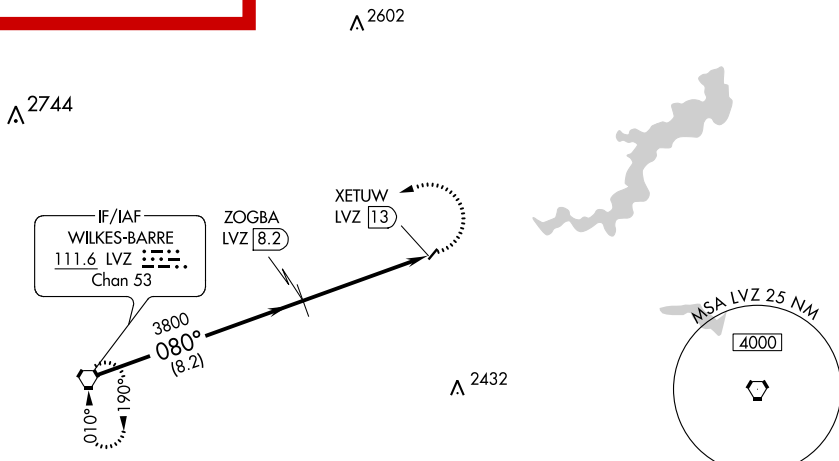
MISSED APPROACH: Climbing left turn to 4000 direct LVZ VORTAC and hold.

MOUNT POCONO ASOS
120.275

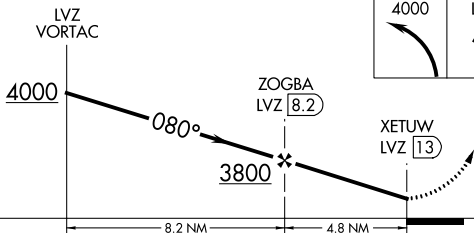
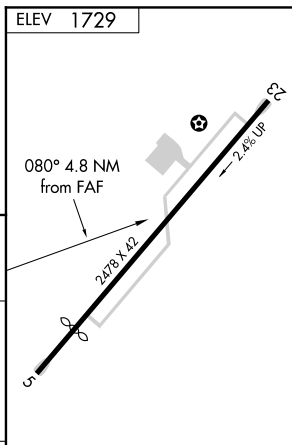
WILKES-BARRE APP CON
126.3 256.7

CTAF **0**
122.9

NOT FOR NAVIGATION



Procedure NA for arrivals on LVZ VORTAC airway radials 047 CW 124.



CATEGORY	A	B	C	D
CIRCLING	2600-1¼ 871 (900-1¼)	2620-1¼ 891 (900-1¼)		NA

IIRL Rwy 5-23

NE-4, 31 JAN 2019 to 28 FEB 2019

NE-4, 31 JAN 2019 to 28 FEB 2019